

The Utica Street Messenger

Summer 2025



THE PRINCIPAL'S CORNER



Dear Friends of Arrupe Jesuit High School,

As I complete my first year as Principal, I am filled with profound gratitude and awe. It has been a grace to witness the tapestry of generosity, commitment, and shared purpose that defines the Arrupe Jesuit community. From day one, I have been welcomed into a mission-driven community—one that truly embodies the call of Fr. Pedro Arrupe, SJ to be “men and women for others.”

Each day, I see our students rise with determination, our families support with love and sacrifice, and our faculty and staff serve with passion and tireless dedication. Administrators work quietly and persistently behind the scenes, ensuring our mission thrives. And standing alongside us are our donors and volunteers—people who give of their time, talent, and treasure so generously and selflessly.

The success and growth of Arrupe Jesuit are not the result of any one person, but of a community rooted in faith, service, and the shared belief that every student deserves opportunity and hope. This sacred work would not be possible without you.

Over this past year, I have often reflected on the words of St. Ignatius: “Love is shown more in deeds than in words.” At Arrupe Jesuit, love shows up in so many ways—early mornings in the classroom, late nights preparing lessons, job partners mentoring students, families cheering at games, and donors quietly making transformative opportunities possible.

Our students are thriving because they are surrounded by people who believe in them. Because of your support, they are growing not only in knowledge, but in faith, resilience, and a sense of purpose. They are learning to find God in all things, to serve others generously, and to discern their path with courage and compassion.

As we look ahead, I remain deeply hopeful. The challenges of the world are many, but so too is the strength of this community. You inspire me with your commitment, your belief in our mission, and your willingness to journey alongside us.

Thank you for the many ways you make Arrupe Jesuit possible. Thank you for walking with our students and believing in their potential. And thank you for allowing me the privilege to serve in this remarkable community.

With deep appreciation,

A handwritten signature in dark ink that reads "Emily Glenn". The script is elegant and cursive.

Emily Glenn
Principal | AMDG



FAITH



COMMUNITY



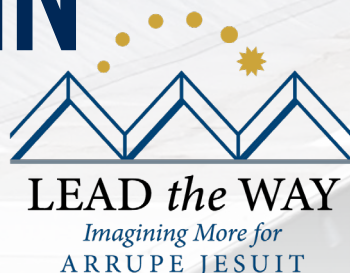
OPPORTUNITY



LEADERSHIP



CAMPAIGN UPDATE



PLEDGES
TO DATE:
\$42.5M



Thanks to the extraordinary generosity of our community, the Lead the Way Capital Campaign has entered an exciting new phase—construction is visibly transforming our campus!

Since breaking ground on October 23, 2024, progress has been steady and inspiring. This spring brought major milestones: concrete was poured, a crane assembled, and steel began to rise, marking the vertical growth of our future campus. On the east side of Utica Street, the Holy Family Church Rectory and Office is complete and has received its certificate of occupancy. On the west side, steel framing now spans from the basement to the third floor. Renovations to the current building are underway while students and faculty are away for summer break.

In a meaningful moment before graduation, the Class of 2025 gathered to sign and bless a steel beam, symbolically embedding their legacy into the future of Arrupe.

To date, we've raised over \$42.5 million toward our \$46.5 million goal. With \$4 million remaining to pay the cost of construction, we're working to complete the campaign as soon as possible—with no debt.



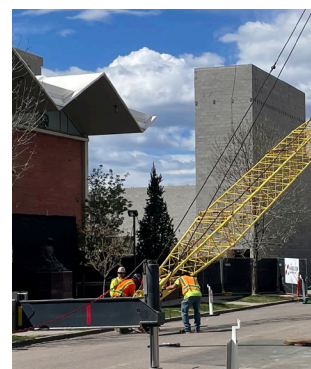
2024 - 2025 Construction Update



✦ Groundbreaking



✦ Concrete Pour



✦ Crane Assembly



REACH *the* SUMMIT

Help us *reach the summit* by making an investment in the *Lead the Way* Campaign.



Join us in the final stretch of supporting Arrupe Jesuit's capital campaign and growth by scanning the QR code or visiting us at arrupejesuit.com/donate.

We're excited to share that the new gymnasium and science wing are on track to open by the winter of 2025, with full campus renovations completed by the fall of 2026. These transformative additions will significantly expand opportunities for our students—both in and out of the classroom.

The new science wing will bring greater flexibility to our curriculum and elevate STEM education at Arrupe with four state-of-the-art science labs, a dedicated makerspace for hands-on learning, and a student gathering area designed to foster collaboration and community.

Our new gymnasium will support the growth of Arrupe's athletic programs, providing a high-quality facility for both student-athletes and visiting teams. Together, these expanded spaces will strengthen academics, enrich extracurricular life, and enable us to welcome an additional 75 students to our mission-driven community.

To learn more or schedule a visit, contact Development@ArrupeJesuit.com.



✨ *Going vertical and steel placement*



✨ *Holy Family Parish Exterior Completed*

GUEST SPEAKERS



Miss USA 2024: Lt. Alma Cooper

What a special and unforgettable day at Arrupe Jesuit High School. We had the privilege of welcoming 1st Lt. Alma Cooper, Miss USA 2024, to spend the morning with our students. At just 22 years old, Alma is already a U.S. Army officer, a data scientist, and a graduate student at Stanford. Her presence was both powerful and approachable, and her story left a lasting impact on everyone in the room.

Lt. Cooper spoke candidly about the challenges she has faced and the mindset that has carried her through, reminding us that our backgrounds do not define our futures. She encouraged our

students to lead with perseverance, hard work, and self-belief. One of the most memorable takeaways from her talk was the “40% Rule,” the idea that when we think we’ve hit our limit, we still have more to give.

Throughout her presentation, she was honest, funny, and deeply motivating. Afterward, she took time for photos, conversations, and lots of smiles. Her visit reminded us all of the power of showing up fully, even when the path is uncertain. Thank you, Lt. Cooper, for your inspiration and for being a living example of what it means to strive with purpose.

If you or someone on your team would be interested in speaking as a part of our Speaker Series, please contact Ruben Martinez, Director of Marketing, at rmartinez@arrupejesuit.com.



Ibotta: Bryan Leach

Bryan Leach, founder of Ibotta, visited our senior entrepreneurial class and delivered a dynamic, honest, and deeply personal reflection on his journey as an entrepreneur. From leaving a secure career in law to navigating the uncertainty of launching Ibotta from the ground up, his story resonated powerfully with our students. "He didn't talk down to us," one student noted. "It was exactly what I wanted to hear," shared another. Mr. Leach's candid account of both the challenges

and rewards of entrepreneurship emphasized the importance of resilience, authenticity, and staying true to one's vision. Students in this Regis University-accredited course walked away not only with practical business insights but also with a renewed sense of confidence in their own entrepreneurial aspirations. This year is Ibotta's first year as a Corporate Work Study Partner, and we are proud to have Arrupe students gaining meaningful, hands-on experience from the Ibotta team.



Sr. Elizabeth Doyle, ASCJ

This fall, sophomore and junior girls attended the Arrupe Women's Vocation Event, hosted by the Pastoral Department. Sr. Liz Doyle, a member of the Apostles of the Sacred Heart of Jesus, shared her vocation story and the journey that led her to religious life, which she first discerned at the Newman Center at the University of Missouri. The event gave Arrupe's young women a special opportunity to explore religious life as a calling and to reflect on how God might be working in their own lives.

Moments like this reflect our Jesuit values of discernment, faith in action, and finding God in all things. Through personal stories and shared experiences, students were invited to consider how they might use their gifts to serve others and to deepen their relationship with God. And of course, the morning concluded with fellowship and donuts, strengthening the sense of community that is at the heart of life at Arrupe.

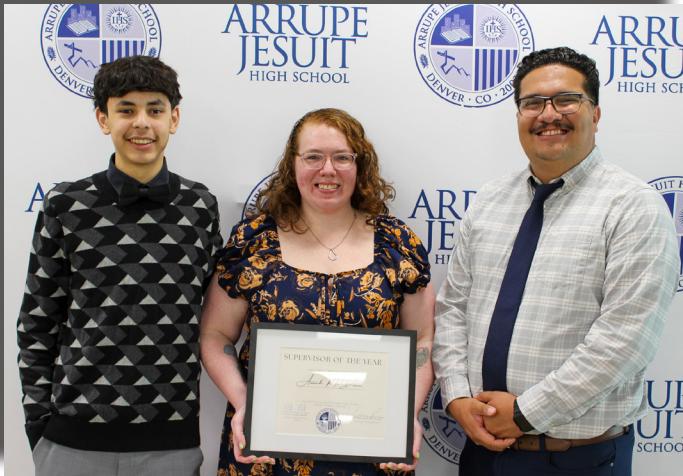


EXCELLENCE IN CWSP



2025 Supervisor of the Year

Amanda McDaniel of Kiewit



Kiewit has partnered with Arrupe through the Corporate Work Study Program since 2010 and will begin its 15th year this fall. Each year, Kiewit hires four students who rotate through departments including IT, Estimating, Central, Strategy, and Proposals. This rotation gives students a deeper understanding of the wide range of careers within a construction company.

This year marks Amanda McDaniel's first as a CWSP supervisor, and her outstanding dedication was recognized with Arrupe's 2025 CWSP Supervisor of the Year Award. Amanda is intentional in creating opportunities for students to learn and contribute meaningfully. Kiewit

supervisors as a whole are equally committed, ensuring that each student's interests align with their placement.

Students consistently value their time at Kiewit. They develop practical skills in programs like Bluebeam and Excel, gain hands-on IT experience, and feel part of a supportive team. As Amanda reflected about one student, "He seemed genuinely excited to get into the hardware!" Partnerships like this help our students thrive, and Kiewit has even welcomed Arrupe alumni back as full-time staff members.

2025 Rookie Supervisor of the Year

Melinda McCluskey of Comcast Cable



We are proud to recognize Comcast as the 2025 Corporate Work Study Program Rookie of the Year.

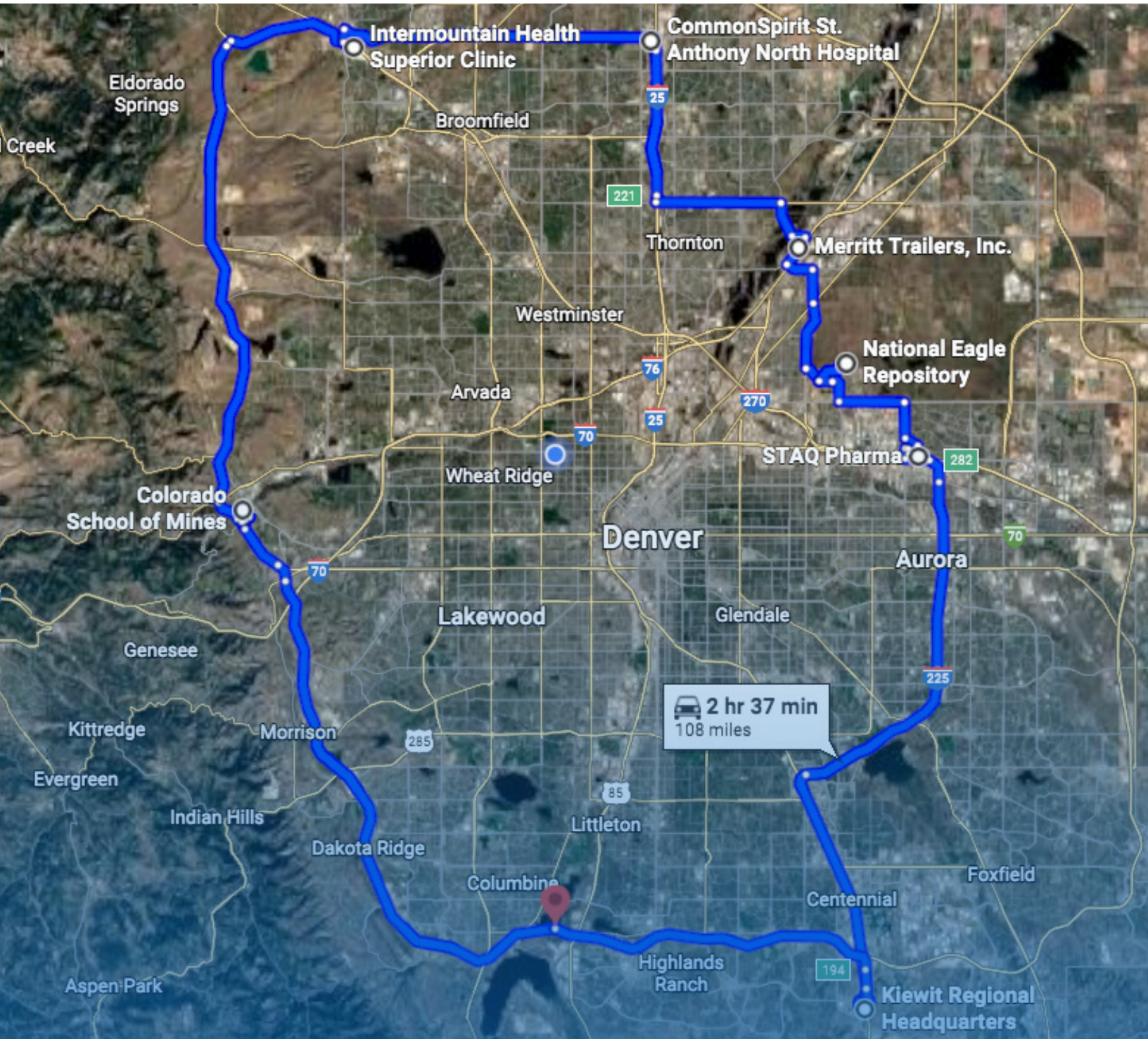
In their inaugural year with Arrupe Jesuit, Comcast welcomed 12 student workers, offering meaningful opportunities that invited growth in skill, confidence, and purpose.

Students contributed across departments and discovered new pathways for their futures. One student reflected, "I've learned a lot about the corporate world and how a tech company like Comcast works...and how to be in a professional environment." Another shared, "Our supervisor is always present to help, and what we're learning is relevant for life after high school."

Comcast is creating a workplace where students feel both challenged and supported. CWSP looks forward to many more years of partnership with Comcast.

NOT YOUR AVERAGE COMMUTE

Each day, the CWSP team hits the road to connect students with opportunity. Covering a wide radius, they ensure students arrive at one of over **128 job sites** across more than **20 professional sectors**. From law firms to hospitals to tech companies, these placements give students real-world experience beyond the classroom. It is more than a commute. It is a daily drive toward career readiness.



This map highlights the daily boundary covered by the CWSP team, transporting students to their work study placements across 10 routes with 5 buses and 5 vans.

PEDRO ARRUPE WRITING CHALLENGE



WRITING CHALLENGE WINNER

Each year, our students are invited to reflect on their growth through the lens of the Grad at Grad—the six pillars of a Jesuit education. Thanks to the generous support of the John Templeton Foundation, and with the help of 70 dedicated volunteers who served as judges, we received 38 submissions for this year's essay contest. Students shared stories of resilience, faith, and transformation, making it difficult to select just one winner. This year's top essay, written by Jade '26, stood out for its vulnerability, emotional depth, and expression of faith in the face of personal loss. We are proud to share an excerpt from her winning piece below:

God is love. God is happiness. God is peace. God is a safe place.

It was on my walk through campus that I found myself thinking of Mr. Medina's Theology class and the reminder to seek out our surroundings because of the peace we find for ourselves. The grass smelled clean, the ponds glistened, and the birds chirped, and God was in every single part of it. God is my best friend and at that moment, I felt the warmest hug that I never knew existed.

Learning to articulate my emotions and words into an understandable paper had many lessons. Where did it flow the most, and where did it need the stops? Yet, I also found what strength in God means.

The perseverance to continue on the path of vulnerability and finish what I started with a newfound understanding. Logic allows us to follow a process, but with God, we have blind faith. These two qualities give me the ability to seek knowledge while finding His purpose for me on this Earth.

Scan the QR code to read the full essays from all three of our student winners.



Winner, Jade, reading an excerpt of her essay during our student assembly, where she received her prize.



TOP OF THE CLASS

2025 Valedictorian Honored



At this year's graduation, Yahaira Rodriguez Hernandez, Class of 2025 Valedictorian and a four-year Sponsor-A-Student participant thanks to Ray and Joan BonAnno, delivered a heartfelt address. Her speech beautifully captured the journey of her class. Headed to Santa Clara University with support from the Deloitte Foundation Scholarship, Yahaira spoke with gratitude, humor, and grace as she reflected on the people and experiences that shaped her four years at Arrupe Jesuit.

She recalled how the Class of 2025 grew from masked freshmen to confident seniors—highlighting Kairos retreats, CWSP placements, service days, and beloved senior traditions like sunrise at Red Rocks and prom night. With warmth and humor, she celebrated even the chaotic moments that became meaningful parts of the Arrupe experience like parking struggles, lunch line mishaps, and her time as a soccer manager.

Yahaira shared that the Graduate at Graduation value that most resonated with her was *Open to Growth*, encouraging her classmates to embrace life's challenges and choose love, joy, truth, and resilience.

She closed with a touching tribute to her parents that reflects the feelings of so many of our students: "Mom and Dad, I hope that standing up here today, I make you both proud because through our good and bad times, everything I do, I do for you. To every parent in the audience, I hope you all acknowledge this as well: this diploma isn't just ours, but yours as well."

Yahaira's journey is a powerful testament to your generous support and the further impact of our Sponsor-A-Student Program.

To learn more about becoming a sponsor, please contact Kelly Thomas Tilley at KThomas@ArrupeJesuit.com.

ALL IN, ALL GENERALS

BACK TO BACK STATE CHAMPS

CONGRATULATIONS, CHEER!

In just its second year of existence, the Arrupe Jesuit Cheer Program has made history—again.

Under the leadership of Coach Mandi Lopez, the Generals clinched their second consecutive 2A/3A Game Day Cheer State Championship, scoring an impressive 92.45. From a team with no prior cheer experience to back-to-back state titles, the growth and grit of these student-athletes is nothing short of extraordinary. With more advanced skills, tumbling classes, and unmatched dedication, the program continues to raise the bar.

Congratulations to Coach Lopez and the entire team on another gold trophy and an unforgettable season!

ATHLETICS ON THE RISE

Sports programs support the overall formation of its participants, fostering a sense of leadership, teamwork, accountability, ethics, hard work, and much more.

Arrupe **offers 10 sports teams**, and in the 2024 - 2025 school year, 205 student athletes participated in a sport. This is a 35% increase in participation over the last three years.



Big congratulations to seniors Alexia and Jazzy for committing to continue their athletic journeys at the collegiate level. Alexia will play volleyball at Hastings College, while Jazzy will join the soccer program at Trinidad State College. Their dedication, talent, and determination embody what it means to be a General, and we cannot wait to see all they accomplish next.

Left to right: Jazzy committed to playing soccer at Trinidad State College and Alexia to Hastings College in Nebraska to play volleyball.



INTRODUCING TH

93 GRADUATES | 100% ACCEPTED INTO A FOUR YEAR COLLEGE | 75% FIRST GEN

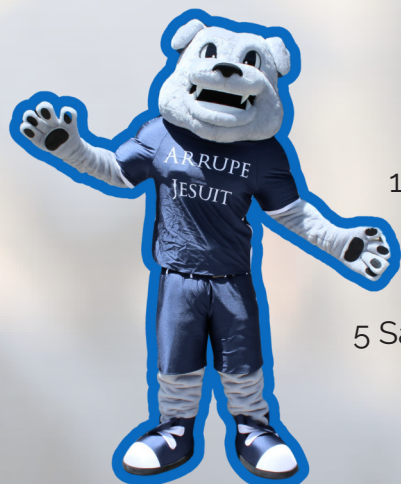
Class of 2025

Arrupe 93 Seniors were accepted into **68 different colleges** and will attend **23 different schools**.

47 students will attend **private schools** and **33** of those students will attend **Catholic colleges**.

The **93 students** in the Class of 2025 earned **scholarships totaling \$30,297,153**.

Special Scholarship Recognition



- 12 Daniels Scholars
- 1 Dell Scholarship
- 3 Colorado School of Mines Promise Award
- 9 Deloitte Foundation Scholarships
- 1 Gates Scholarship
- 4 Howley Scholarships
- 1 Loyola University Chicago Cristo Rey Scholarships
- 2 PEO Chapter GK Scholarship
- 15 Regis University Arrupe Scholarships
- 5 Santa Clara University Cristo Rey Promise Scholarships
- 1 UNCF Best Buy Scholars Program
- 1 Yes! Communities Scholarship



BACCALAUREATE MASS



GRADUATION



E CLASS OF 2025

GENERATION HIGH SCHOOL GRADUATES | 95% FIRST GENERATION COLLEGE BOUND



Georgetown
University

Yale



Santa Clara
UNIVERSITY



University
of San Diego®



COLORADO STATE UNIVERSITY



University of Colorado
Denver



ST. MARY'S
UNIVERSITY



SEATTLE
UNIVERSITY



MSU
DENVER



COLORADO SCHOOL OF
MINES



LOYOLA
UNIVERSITY CHICAGO



REGIS
UNIVERSITY



COLORADO MESA
UNIVERSITY



RED ROCKS
COMMUNITY COLLEGE



FRONT RANGE
COMMUNITY COLLEGE



EMILY
GRIFFITH
TECHNICAL COLLEGE



ARRUPE
JESUIT
HIGH SCHOOL

Nonprofit
U.S. Postage
PAID
Denver, CO
Permit No. 1330

4343 UTICA STREET | DENVER, CO
80212 WWW.ARRUPEJESUIT.COM

Return Service Requested

Michael J. O'Hagan, President
MOHagan@ArrupeJesuit.com

Emily Glenn, Principal
EGlenn@ArrupeJesuit.com

Kristina Stuber, Director of Development
KStuber@ArrupeJesuit.com

Chad Cookinham, Director of CWSP
CCookinham@ArrupeJesuit.com

Ruben Martinez, Director of Marketing
RMartinez@ArrupeJesuit.com

Debbie Mulcahy, Business Manager
DMulcahy@ArrupeJesuit.com



FAITH | COMMUNITY | OPPORTUNITY | LEADERSHIP